

CASE STUDY



Basingstoke
Aquadrome



The Company and Project

Total Leisure Engineering are a long standing client of Bensons, their core business is the provision of technical support to swimming pool and leisure facilities across the UK, including filtration and water treatment, air and water features, hydraulic moveable floor systems and electrical control systems

In early 2022, councillors in Basingstoke agreed a major investment in Basingstoke Aquadrome so that it could be upgraded for future generations to enjoy . As part of this, Total Leisure Engineering were requested to up-grade the swimming pool water filtration system for the various pools on site.

SUPPLIER:

Bensons Control Panels

CLIENT:

Basingstoke Aquadrome

PROJECT:

Design and Manufacture control panels for a major leisure pool refurbishment

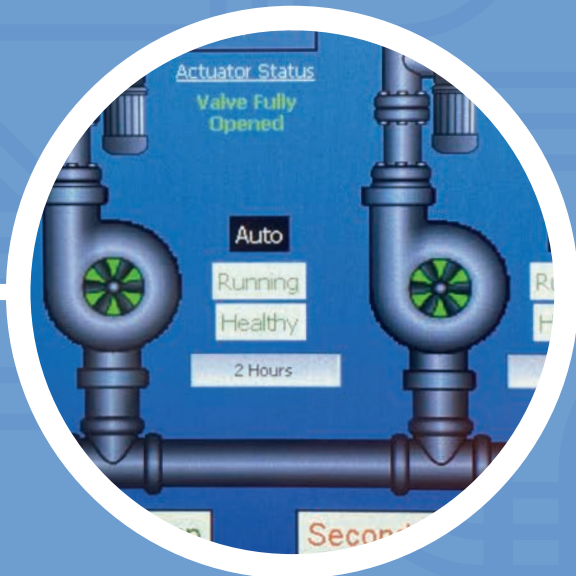
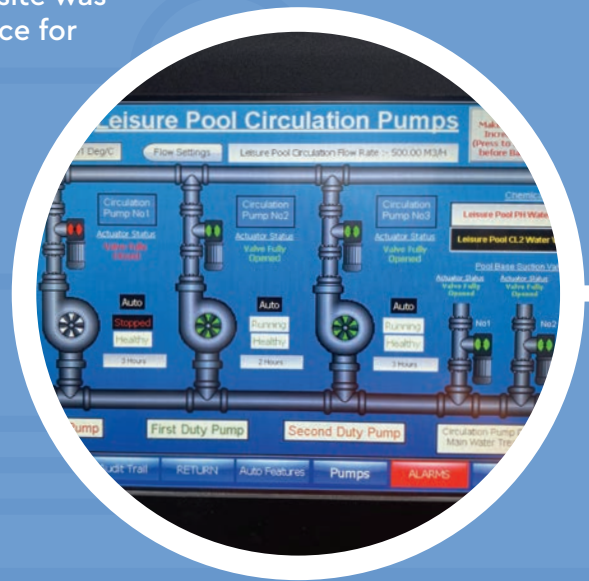
RESULTS:

A substantial project delivered to tight timescales

The Challenge

To design and manufacture the control panels quickly to deliver a solution within the project refurbishment timeframes.

Since this was a refurbishment project, the plantroom on site was already constructed and had equipment in place. The space for the suite of control panels was pre-defined, meaning that the solution designed by Bensons needed to fit in the existing space. In addition, the existing plant meant that the 7.2m wide suite of control panels had to be designed such that it could be delivered in six sections of 1m and one section of 1.2m wide, then re-assembled on site.



The project was carried out during 2022, when the global supply chain was still struggling to supply equipment in a timely manner.

This meant that Bensons had to identify a different supplier of Variable Speed Drives to use on this project, since our normal supplier was unable to meet the component lead-times.

CASE STUDY



Basingstoke
Aquadrome



The Solution

Exploiting our in depth knowledge of Total Leisure Engineering requirements, using trusted supply chain partners to ensure a fast tracked solution.

Recognising the importance of this project to Basingstoke Council and to Total Leisure Engineering, Bensons was able to fast track the project from a perspective of developing a fully costed proposal that aligned with the project requirements. Once instructed, Bensons was able to exploit our understanding of Total Leisure Engineering requirements to quickly create a set of designs that would full-fill the design brief, taking account of the electrical requirements of the system and the physical space constraints.

Once the design was approved, Bensons was able to use its spacious factory together with its large and highly experienced workforce to build and test the full 7.2m wide control panel in one piece. By working with our trusted supply chain partners, Bensons was able to propose Invertek as a suitable second source of Variable Speed Drives for the project. Whilst Bensons had manufactured control panels featuring these drives, they had not been used by Total Leisure Engineering before. To avoid the risk of Total Leisure Engineering engineers running into problems on-site in Basingstoke during commissioning, Bensons was able to arrange for Invertek technical support to be available during the testing phase at Bensons to ensure that the drives could be configured correctly.

Once the features panel was fully tested, it was split into seven parts and delivered to site in Basingstoke, where upon it was reconnected and all connections retested.



The Result

Through close collaboration between Total Leisure Engineering and Bensons, it was possible to secure and deliver a substantial project to tight timescales. Enabling the upgrade of the Basingstoke Aquadrome to be complete in a timely manner.